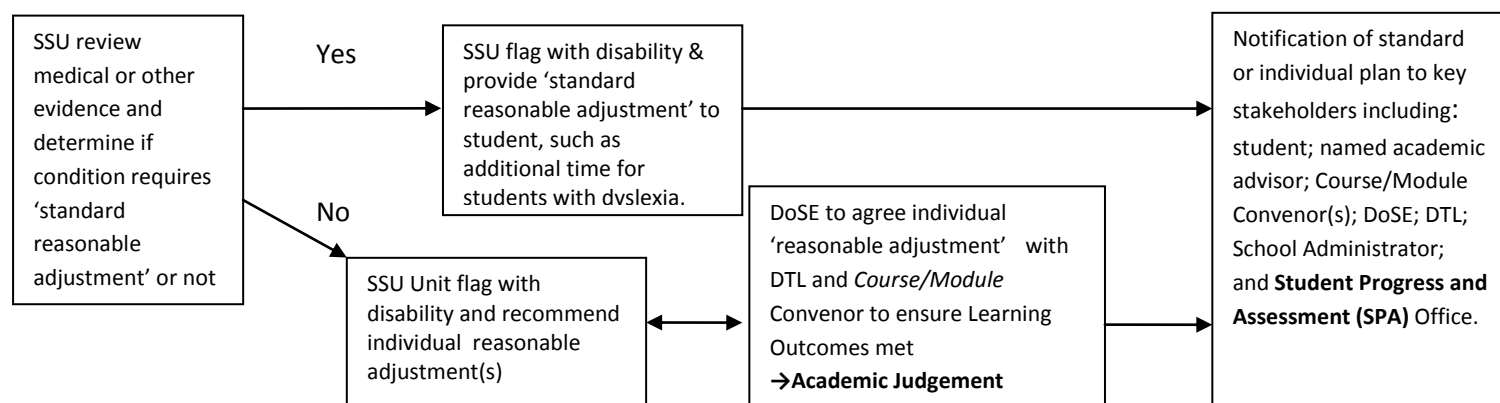


APPENDIX 2: REASONABLE ADJUSTMENTS FOR STUDENTS WITH DISABILITY WITH AND WITHOUT A MITIGATING EVIDENCE CLAIM (MEC) (September 2013)

- For students with a declared disability, the Student Support Unit (SSU) provide support based on an 'anticipatory approach'. Normally SSU require 3 weeks notice prior to the implementation of reasonable adjustments including changes to existing arrangements (including extensions to deadlines, alternative assessment modes and exam arrangements) which will involve a decision by the Director of Student Experience (DoSE) in consultation with academic colleagues including the Director of Teaching and Learning (DTL) to ensure the on-going academic integrity of the module assessment. Reasonable adjustments may also be made in cases of pregnancy or related maternity needs, and in cases of evidenced 'temporary disability' of greater than 3 weeks duration.



2. Processing of MEC for students with a disability flag on the record system

